

# **PBF** Hydraulic Press Brakes

Series



➤ Easy  
to Use

➤ Faster

➤ Productive

➤ Winning

➤ Ergonomic



As a total supplier for sheet metal manufacturing with almost 70 years of experience, Durma understands and recognizes the challenges, requirements and expectations of the industry. We strive to satisfy the ever higher demands of our customers by continuously improving our products and processes while researching and implementing the latest technologies

In our three production plants with a total of 1.614.586 ft<sup>2</sup>, we dedicate 1,000 employees to delivering high quality manufacturing solutions at the best performance-to-price ratio in the market.



# PRODUCTION IS **MORE EFFECTIVE** NOW



From the innovations developed at our Research & Development Center to the technical support given by our worldwide distributors, we all have one common mission: to be your preferred partner.

**Durmazlar offers it's machines to the world markets under the Durma brand.**



1

High technology,  
modern production  
lines



2

Top quality  
components



3

High quality  
machines designed  
in R&D Centre

## **PBF Series Press Brakes**

### **Customer-oriented**

We designed an excellent machine for our clients who do not need high stroke and work in three shifts. We support you with low investment costs, efficient, precise, minimum maintenance costs.

PBF series serves your company and advances your production standards.



Production is **More Effective Now.**



## The "Magic Touch" for your company

- Fast, productive and perfect bendings
- High efficiency
- Low energy consumption

## Perfectly equipped for precise bendings and economic solutions

Developed by the expertise of R&D Center engineers of DURMAZLAR  
PBF Hydraulic Press Brake will strengthen your business with innovative solutions.



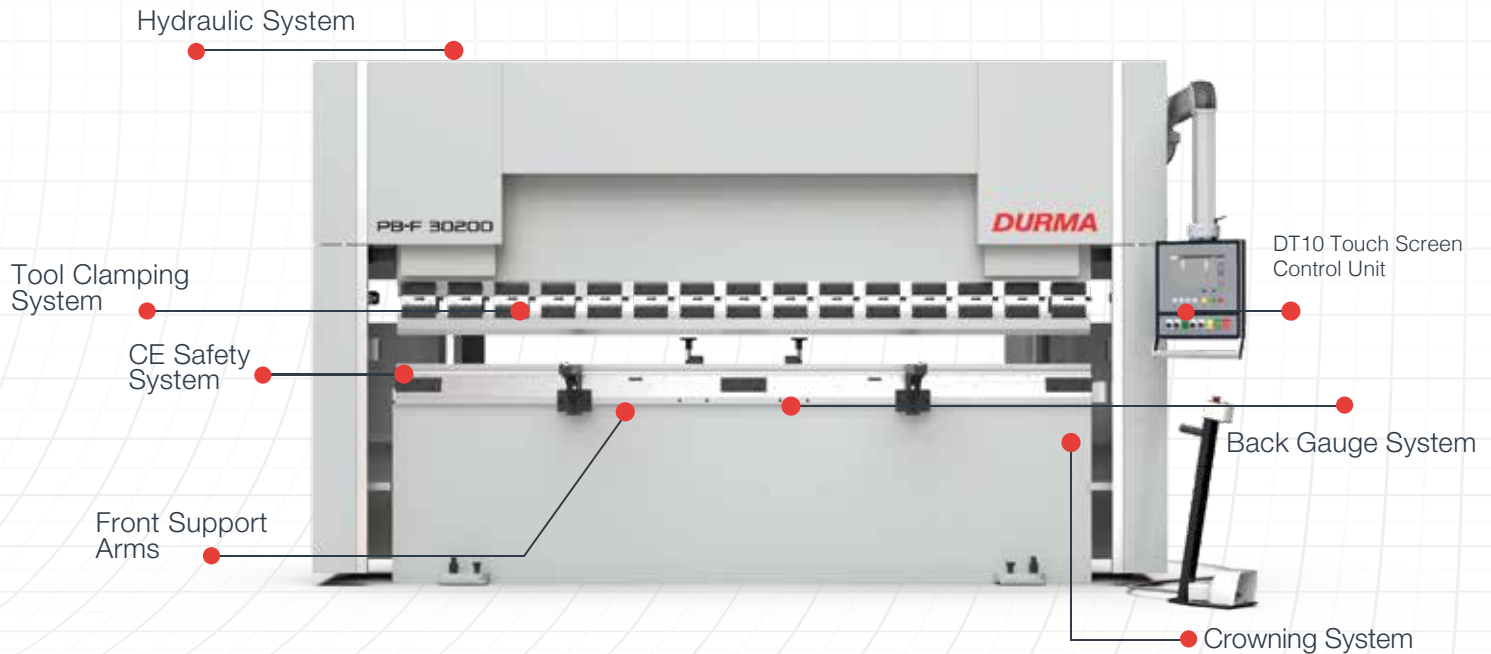
### Advantages

- Better and faster bendings
- Rigid body structure
- High sensitivity and repeatability
- Low service cost & Low maintain cost
- Hi-tech equipment
- Increases the value of your company
- Reliable brand



## GAIN MORE POWER

Easy solutions for your investments  
PB Hydraulic Press Beds featuring low investment cost, high productivity and perfect performance / price ratio, ensures and obtains all solutions for your bending needs.



### General Specifications

- High sensitivity, Stress relieved steel construction body, long life Mono Block Frame
- DURMA designed and copyrighted guiding system
- Ball Screw and linear guide integrated perfect back gauge system
- Durable, long life and sensitive bending capable special hardened top tools
- Suitable for segmented tools special and fast tool holding system
- Sensitive solutions at long and deep bending
- High accuracy linear scales
- CE safety standards
- Environment friendly, efficient and perfect bending combinations

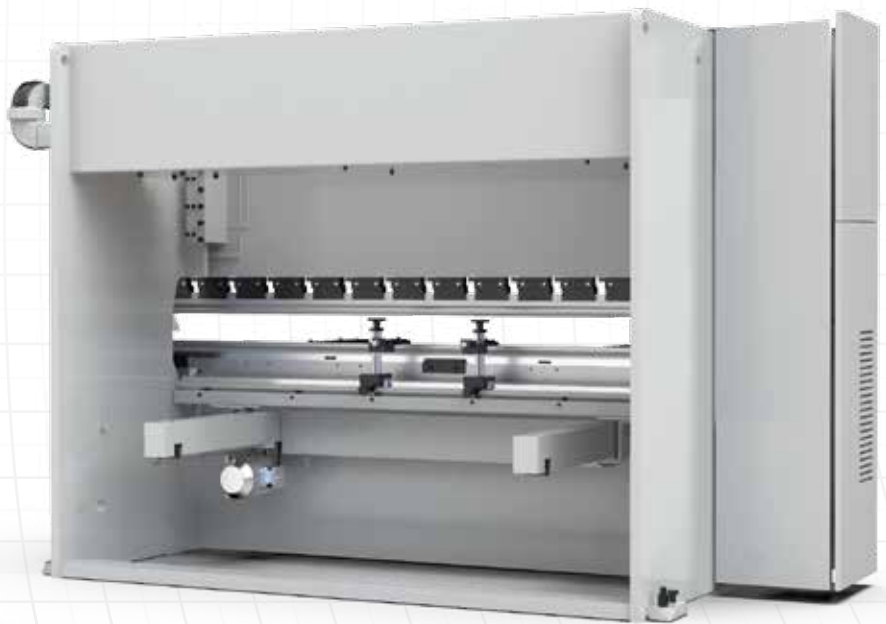


Production is *More Effective Now.*

# STRONG BACK GAUGE SYSTEM

- **Precise**
- **Reliable**
- **Strong**

- Fast and high precision
- Reliable process
- Adjustable from each point
- Crash-proof
- Maintenance free

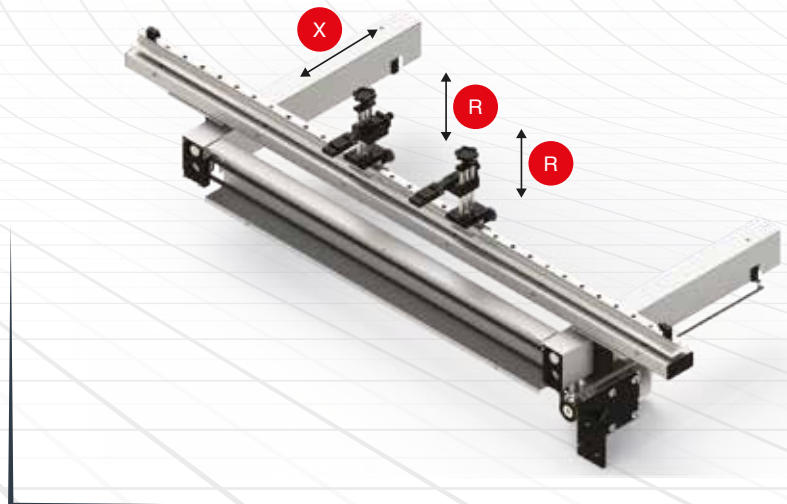


## Why DURMA Back Gauge ?

Most important feature to achieve perfect bending is the stability and the design of the back gauge, which allows an impeccable and correct product to be produced.

The high speed **ballscrew** back gauge system movement is also supported with **double linear guides**, which helps the back gauge achieve long life, greater sensitivity and strengthens against any collisions.

Special designed finger blocks with steps to achieve maximum stability can also be supplied for every kind of bending solution.



Standard back gauge  
X=1'7.7" Back gauge system with: motorized & linear guide & ballscrew  
R manual adjustment

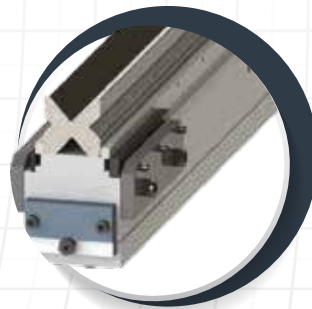
## TOOL HOLDERS AND TOOLS

Bending performance is increased with high European clamping system and easiness to use. Narrow table for Z bending ( a press brake operation that makes two equal and opposite bend ) and table designed for European style tool holder.

DURMA is your solution partner with various tool options.



European  
Clamping System



European Type  
Bottom Tool (4V Die)



Quick  
Release Clamping



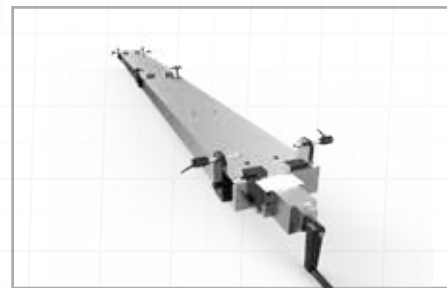
DURMA Multi  
V Bottom Tool



## SAFE AND ACCURATE BENDS WITH TOP QUALITY EQUIPMENTS

### ■ Crowning System

Manual or CNC-controlled motorized crowning system simplifies bending, by adjusting each point of the bending parts to acquire straight bends. The need for shimming is eliminated.



CNC Crowning System

### ■ Linear Guide Front Sheet Supports

Rugged support arms with tilting stops are mounted on a linear guide rail system. This allows 'finger-tip' lateral adjustment as required by the bend length of the part. They are also equipped with side gauges for the fast, easy and accurate feeding of small or large parts.



Linear Guide Front Sheet Supports

### ■ CE Safety Systems

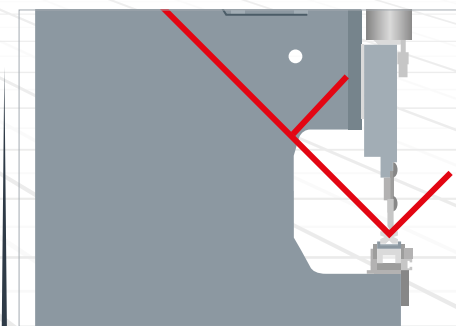
Our machines are designed in accordance with CE-Norms to ensure your safety with hydraulic, electric, appropriate height covers and laser light curtains. CE safety in tandem machines are also provided with light barriers.



CE Laser Safety System

### ■ Stable Top Beam Movement

By using long and planar guiding surfaces, all the disadvantages of point guiding are eliminated 100% free bending space: Guiding system that eliminates bending between frame has been moved to the outside of the frame.



90 Degree Endless Bend

DURMA Touch

## DT10 Control Unit



Everything is Under Control  
With User-Friendly Interface...



Create profile with touch screen



Online service via internet connection



Diagnostic mode



Easy programming page

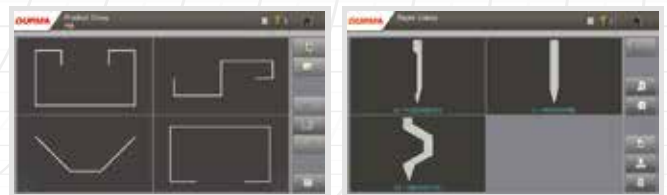


Automatic bend calculation and listing



Tool programming and library

- Automatic bend listing
- Archiving your bendings
- Easy bend functioning
- 2D color graphics display and multiple simulation
- Linux operating system
- D-Bend offline software
- Tandem compatible
- Multiple language options
- Ergonomic panel design
- USB port, back-up 10" TFT color touch screen



### All the solutions are a click away with the DT10

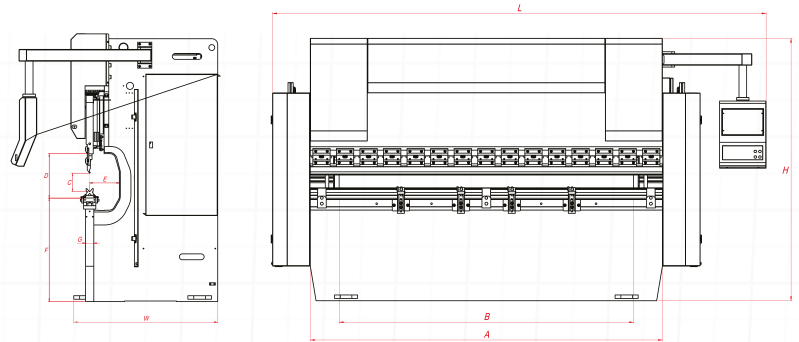
Alarm Help Screen

Alarm help screen is finding a solution for the operator step by step. This module makes the operator's life easier with rapid solutions.

### D-Bend offline software

D-Bend Offline software allows you to simulate your bendings at your desk in your office. You can create your tools. It provides the opportunity to make new programs without interrupting production. In addition to the errors that occur when you start your process yet you will find the opportunity to pre-intervention. D-Bend verifies your unfoldment. Creates verified part drawings for laser, punch, and plasma machines.

Production is *More Effective Now.*



## PBF Series Technical Details

| PBF Series               | Unit     |   | PBF 1030 | PBF 2560 | PBF 30120 | PBF 30200 | PBF 40160 |
|--------------------------|----------|---|----------|----------|-----------|-----------|-----------|
| Bending Force            | US ton   |   | 33       | 66       | 132       | 220       | 176       |
| Bending Length           | ft.      | A | 3'5.3"   | 8'4.4"   | 10'0.1"   | 10'0.1"   | 13'3.4"   |
| Distance Between Columns | ft.      | B | 2'9.5"   | 7'0.6"   | 8'4.4"    | 8'4.4"    | 11'9.7"   |
| Stroke                   | inch     | C | 6.3"     | 6.3"     | 7.1"      | 8.3"      | 7.9"      |
| Daylight                 | ft.      | D | 1'3.4"   | 1'1.8"   | 1'2.8"    | 1'5.5"    | 1'4.9"    |
| Throat Depth             | inch     | E | 9.8"     | 9.8"     | 9.8"      | 9.8"      | 11.8"     |
| Y Axes Rapid Speed       | inch/sec |   | 7.9"     | 4.7"     | 3.9"      | 3.9"      | 6.3"      |
| Y Axes Working Speed     | inch/sec |   | 0.4"     | 0.4"     | 0.4"      | 0.3"      | 0.4"      |
| Y Axes Return Speed      | inch/sec |   | 5.1"     | 2.8"     | 3"        | 2.9"      | 5.5"      |
| Table Height             | ft.      | F | 2'8.9"   | 2'8"     | 2'10.6"   | 2'9.8"    | 2'9.8"    |
| Table Width              | ft.      | G | 4.1"     | 4.1"     | 4.1"      | 4.1"      | 4.1"      |
| X Axes Working Speed     | inch/sec |   | 9.8"     | 9.8"     | 9.8"      | 9.8"      | 9.8"      |
| X Axes Travel            | ft.      |   | 1'3.7"   | 2'0.4"   | 2'0.4"    | 2'0.4"    | 2'0.4"    |
| Motor Power              | hp       |   | 7,4      | 7,4      | 14,7      | 20,1      | 20,1      |
| Length                   | ft.      | L | 8'1.2"   | 10'8"    | 12'3.6"   | 12'3.6"   | 15'10.9"  |
| Width                    | ft.      | W | 4'1.2"   | 3'11.2"  | 4'0.4"    | 4'6.7"    | 6'2.8"    |
| Height                   | ft.      | H | 7'4.4"   | 7'8.5"   | 7'10.5"   | 8'2.4"    | 8'6.8"    |
| Weight Approx.           | lbs      |   | 7165     | 9370     | 13010     | 17990     | 23150     |

## STANDARD & OPTIONAL EQUIPMENT

### Standard Equipments

Control Unit - DT 10

"Y1, Y2, X - 3 Axis CNC Control

(X = 1'3.7" for PBF 1030, X = 2'0.4" for PBF 2560 - 30120 - 30200 - 40160)"

F. AKAS FPBS Safety System without CE

Servo Motor Backgauge - Linear Guided & Ballscrew System (X)

Manual Crowning System (for PBF 30120, PBF 30200, PBF 40160)

European Style Tool Clamping System with Bottom Tool Holder

Sliding Front Support Arms (with T-Slot and Stopper)

Non-CE Safety Side Covers

World Standard Electric Equipment

### Optional Equipments

Control Unit - DT 15

Manual F.AKAS II M FPSC-B-C (Safety PLC) with CE

Motorized X, R Axis Backgauge System (X = 1'7.7")

Manual Crowning System for PBF 2560

CNC Control Motorized Crowning System (Available for PBF 2560 - 30120 - 30200 - 40160)

DURMA Multi-V Bottom Tool

DBEND 3D Bending Simulation Program

Quick Release Clamping System

Oil Cooler / Oil Heater

Additional Backgauge Finger and Sliding Front Support Arms

Special Packing for Overseas Shipments



Production is *More Effective Now.*

# FAST ON SERVICE AND SPARE PARTS

DURMA provides the best level of service and spare parts with qualified personnel and spare parts in stock. Our experienced and professional service personnel are always ready at your service. Our professional training and application enriched courses will give you an advantage to use our machinery.



# Product Groups

# **DURMA**



Durmazlar Makina San. Tic. A.Ş. has right to change catalogue values and machine technical details without notice.

**f** Durma International  
**@** durmainternational  
**X** durmaint  
**▶** durmamachines  
**in** Durmazlar



INCH 2025/05/V04



**Durmazlar Makina San. ve Tic. A.Ş.**  
**OSB 75. Yıl Bulvarı Nilüfer-Bursa /**  
**Türkiye**

**P: +90 224 219 18 00**

**F: +90 224 242 75 80**

**info@durmazlar.com.tr**

**www.durmazlar.com.tr**